

GEAR 格尔



一站式传动技术解决方案专家
ONE-STOP DRIVE TECHNOLOGY
SOLUTIONS EXPERTS

GEAR 格尔

减速机产品手册

浙江格尔减速机有限公司

地址: 浙江省平阳县万全镇宋桥工业区
电话: 0577-63171515 0577-63171616
0577-63775881 0577-63775882
0577-63775883
传真: 0577-63770111 0577-63775889

ZHEJIANG GEAR SPEED REDUCER CO.,LTD.

ADD: Songqiao Industry Park, Wanquan
Town, Pingyang County, Zhejiang Province
TEL: 0577-63171515 0577-63171616 0577-63775881
0577-63775882 0577-63775883
FAX: 0577-63770111 0577-63775889

邮箱: info@omiter-group.com
网站: www.omiter-group.com

格尔减速机(南通)有限公司

地址: 江苏省海安市海安开发区和顺路
电话: 15365507088 15365507078
0513-88602212

传真: 0513-88602213

GEAR SPEED REDUCER NANTONG CO.,LTD.

ADD: Heshun Road, Hai'an Industry
Park, Hai'an City, Jiangsu Province
TEL: 15365507088 15365507078
0513-88602212
FAX: 0513-88602213

E-mail: info@omiter-group.com
WEB: www.omiter-group.com

山东格尔减速机有限公司

地址: 山东省临沂市罗庄区蒙山大道与化武路
交叉路口西50米
电话: 0539-8263998 18054533998

传真: 0539-8263998

SHANDONG GEAR SPEED REDUCER CO.,LTD.

ADD: 50 meters west of intersection of
Mengshan Avenue and Huawu Road, Luozhuang
District, Linyi City, Shandong Province
TEL: 0539-8263998 18054533998
FAX: 0539-8263998



上图：于 2022 年完工的位于平阳万全镇全新格尔办公楼

右一：过去格尔工厂的一侧

右二：格尔减速机南通有限公司



公司简介 Company Profile

格尔 GEAR 是一家集传动设备研究、开发、制造和销售为一体的知名企业，下设温州、南通、山东三大生产基地，是中国齿轮协会理事单位、国家高新技术企业、浙江省科技型企业、温州市信息化示范单位。公司技术研发中心被认定为浙江省省级企业技术中心，现拥有 2 项国家发明专利，22 项实用新型专利。

格尔产品已广泛应用于冶金矿山、啤酒饮料、印染纺织、起重运输、筑路机械、计量计控、石油化工、仓储物流、木工机械、环保设备、印刷包装、粮油面粉、制药皮革、立体停车等众多领域。在同行中率先通过 ISO9001:2000 质量管理体系认证、14000 环境管理体系认证、CE 认证、煤矿安全认证、矿山安全认证、瑞士 SGS 认证等。

公司主营产品有四大系列硬齿面减速机，大功率齿轮箱，蜗轮减速机，行星减速机，摆线针轮减速机，精密行星减速机，齿轮马达，完善的系列产品满足你的所有需求。

格尔公司乘着传承、创新、开拓的精神与您一起共创美好未来！

GEAR speed reducer company is a famous professional enterprise that integrates research, development, manufacture and sales of drive equipment. Our company has three manufacturing bases, in Wenzhou Nantong and Shandong City, is a director unit of China gear professional association, Country high new technical enterprise, Zhejiang science and technology enterprise, Wenzhou informatization demonstration enterprise. R&D center is considered as Zhejiang province enterprise technic center, has 2 invention patents and 22 utility-model patents.

GEAR products are widely used in metallurgy mine, beer beverage, painting and dyeing, hoisting and transport, machinery of constructing road, measure and control, storage and logistics, woodworking machinery, equipment of environment protection, packing, pharmacy and leather, stereo garage etc. Company firstly passed the ISO9001:2000 Quality Management System, 14000 Environment Management System, CE certification, Coal and mining safe certification, SGS certification etc. Company main products are R,S,K,F hard-surface geared motor, high-power gear box, worm gear reducer, planetary gear reducer, cycloidal pin wheel reducer, precision planetary reducer, AC/DC Motor, complete series products can meet all your needs.

GEAR company is creating a brilliant future together with you by holding the spirit of inheriting, innovating and pioneering.

发展历程 Development History

1988年

创立 瑞安迈特传动机械设备厂

研发成功无极变速器并上市

1988 establish Rui'an Maite Transmission Equipment Factory.

Successfully reserch and develop MB variable speed reducer, and launch.

1996年

更名 温州迈特传动机械有限公司

研发成功齿轮减速机并上市

1996, change name to Wenzhou Maite Transmission Equipment CO.,LTD

Successfully reserch and develop helical gear reducer, and launch.

2005年

成立 浙江欧迈特减速机械有限公司

主营四大系列减速机, 工业齿轮箱

2005, establish Zhejiang Omiter Speed Reducer CO.,LTD

Mainly produce GR/S/K/F helical gear reducer, industrial gearbox.

2008年

浙江欧迈特减速机械有限公司
成立企业技术中心

2008, Zhejiang Omiter Speed Reducer CO.,LTD, establish the Enterprice Technology Center.

2013年

浙江格尔减速机有限公司成立

2014年

通过 ISO9001 认证, 温州科技型
企业认证

2013 Zhejiang GEAR speed reducer CO., LTD is established.

2014 Passed ISO9001 certification, Wenzhou Science and Technology Enterprise Certification.

2016年

获得省级高新技术企业认证

2016 Obtained Provincial High-tech Enterprise Certification.

2022年

山东格尔减速机有限公司成立

浙江格尔减速机有限公司和浙江
欧迈特减速机械有限公司合并

2022 Shandong Gear Speed Reducer CO.,LTD is established.

Zhejiang Omiter Speed Reducer CO.,LTD merged into Zhejiang Gear Speed Reducer CO.,LTD

2021年

格尔减速机(南通)有限公司成立

2021 Gear Speed Reducer(Nantong) CO.,LTD is established.

Future ~



一站式传动技术解决方案专家
ONE-STOP DRIVE TECHNOLOGY
SOLUTIONS EXPERTS



- 1: 格尔生产车间中的瑞士莱斯豪尔 REISHAUER 磨齿机 -1
- 2: 格尔生产车间中的瑞士莱斯豪尔 REISHAUER 磨齿机 -2
- 3: 格尔生产车间中的瑞士莱斯豪尔 REISHAUER 磨齿机 -3
- 4: 格尔生产车间中来沈阳机床 SYMG 的卧式车削车床
- 5: 日本马扎克 Mazak 金属箱体加工生产线
- 6: 格尔生产车间中来秦川机床 QCMT&T 的设备
- 7: 格尔生产车间中来秦川机床 QCMT&T 的数控成形砂轮磨齿机



生产合作伙伴 Production Partner

格尔 GEAR 的生产线机床设备来自国内外知名机床制造厂商，如瑞士莱斯豪尔 REISHAUER、日本山崎马扎克 MAZAK、重庆机床 CHMTI、秦川机床 QCMT&T、沈阳机床 SYMG

GEAR's production line machine tools come from well-known machine tool manufacturers at home and abroad, such as Switzerland REISHAUER, Japan MAZAK, CHMTI, QCMT&T, Shen SYMG.

REISHAUER

Mazak

SYMG

秦川机床

CHMTI
重庆机床

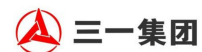




应用领域 Application Area

电力设备 / 煤炭机械 / 冶金设备 / 环保水处理 / 环保垃圾处理 / 水泥机械 / 港口起重 / 物流运输与分拣 / 舞台设备 / 纺织印染设备 / 塑料机械 / 包装机械 / 木工机械 / 自动化流水线设备 / 畜牧机械 / 粮油机械 / 化工搅拌设备 / 建筑机械 / 造纸机械 / 汽车生产线设备 / 焊接设备 / 陶瓷设备 / 玻璃设备 / 烟草设备 / 铸造机械 / 工程机械 / 锂电装备

Electric power equipment / Coal mechanical / Metallurgical equipment / Environmental protection water treatment / Disposal machinery / Port lifting / Logistics delivery and sorting / Stage / Textile printing and dyeing equipment / Plastic machinery / Packaging machinery / Woodworking machinery / Automated assembly line equipment / Livestock machinery / Grain and oil machinery / Chemical mixing equipment / Construction / Papermaking machinery / Automobile production line equipment / Welding equipment / Ceramic equipment / Glass equipment / Tobacco equipment / Casting machinery / Construction machinery / Lithium electric equipment



| CH | 18 | 400 | 30 | SZ | B | G1 | LB |
|--|----------------------------------|--|------------------------------|---|---|---|----|
| 機型代號 Model code | 輸出軸直徑 Output shaft dia | 馬力 Horsepower | 減速比 Speed reducing ration | 電壓極速 Top speed of voltage | 附件 Accessory | 入線口方向 WIRE INLET | |
| CH: 臥式 CH: horizontal CV: 立式 CV: vertical | 18 22 28 32 40 50 | 100W 200W 400W 550W 750W 1100W 1500W 2200W 3700W | 1:3...1:1800 | A=1 φ 110V4P C=1 φ 220V4P S=3 φ 220V4P U=3 φ 380V4P W=3 φ 440V4P Y=3 φ 220~240/ 380~440V4P Z= 縮框型減速電機 light type duty | B : DC90V安全剎車器 YB BRAKE UNIT : 手釋放剎車器 WITH RELEASE BRAKE UNIT D : DC24V送電剎車器 DC24V BRAKE | 依出力軸看配線盒方向 VIEW FROM OUTPUT SHAFT G1: 左方向(標準型) LEFT (STD) G2: 右方向 RIGHT G3: 上方向 UPPER G4: 下方向 LOWER T: 向上 TOP D: 向下 DOWN F: 向前 FORWARD B: 向後 BACK L: 向左 LEFT R: 向右 RIGHT | |



配線盒方向選定
(TERMINAL BOX DIRECTION)

| TYPE | G1-左方向 LEFT SIDE | G2-右方向 RIGHT SIDE | G3-上方向 UPPER SIDE | G4-下方向 LOWER SIDE |
|----------------|---------------------|----------------------|----------------------|----------------------|
| CH型 CH TYPE | | | | |
| | G1 | G2 | G3 | G4 |
| CV型 CV TYPE | | | | |
| | G1 | G2 | G3 | G4 |

入線口方向
(WIRE INLET DIRECTION)

| | | | | | | | |
|----|----|----|----|----|----|----|----|
| | | | | | | | |
| LD | LT | RD | RT | TL | TR | DL | DR |
| | | | | | | | |
| LF | LB | RF | RB | TF | TB | DF | DB |

減速機與透氣塞安裝位置示意圖
(REDUCER AND VENTILATION INSTALLATION)

| | | | |
|---------------------------------------|--------------------------------|--------------------------------|----------------------------------|
| CH 機型安裝範例 INSTALLATION EXAMPLES | | | |
| | H0標準標準(CPG正立CPG STAND) | H3(左側LEFT SIDE) | H6(倒裝INVERT) |
| | | | |
| | H9(右側RIGHT SIDE) | HU(軸向上SHAFT UP) | HD(軸向下SHAFT DOWN) |
| CH 機型安裝範例 INSTALLATION EXAMPLES | | | |
| | V0標準標準(CPG正立CPG STAND) | V3(CPG旋轉90° CPG CLOCKWISE 90°) | V6(CPG旋轉180° CPG CLOCKWISE 180°) |
| | | | |
| | V9(CPG逆轉90° CPG LEFT TURN 90°) | VU(軸向上SHAFT UP) | VD(軸向下SHAFT DOWN) |



0.1KW

CH 型卧式三相鋁殼 (剎車) 馬達減速機
CH HORIZONTAL TYPE WITH ALUMINON PLATE 3PHASE(BRAKE)GEAR MOTOR

馬達尺寸圖 Dimensions chart

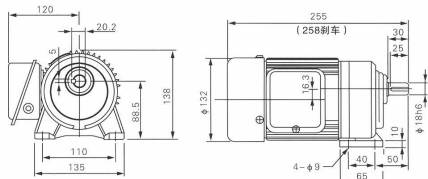
單位: mm

標準型 CH-18-100-3~60

Mormal Duty Type CH-18-100-3~60

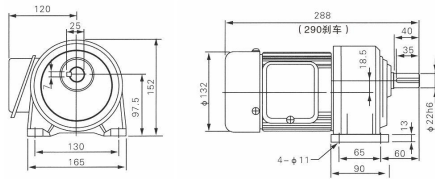
輕負載縮框型 CH-18-100-70~200

Light load miniature frame CH-18-100-70~200



標準型 CH-22-100-60~200

Mormal Duty Type CH-22-100-60~200



CV 型立式三相鋁殼 (剎車) 馬達減速機
CV RTICAL TYPE WITH ALUMINON PLATE 3PHASE(BRAKE)GEAR MOTOR

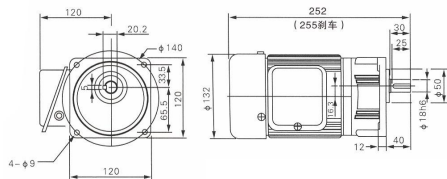
馬達尺寸圖 Dimensions chart

標準型 CV-18-100-3~60

Mormal Duty Type CV-18-100-3~60

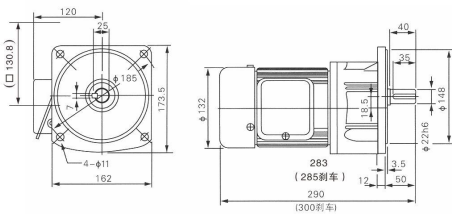
輕負載縮框型 CH-18-100-70~200

Light load miniature frame CH-18-100-70~200



標準型 CV-22-100-60~200

Mormal Duty Type CV-22-100-60~200



0.2KW

馬達尺寸圖 Dimensions chart

單位: mm

CH 型卧式三相鋁殼 (剎車) 馬達減速機

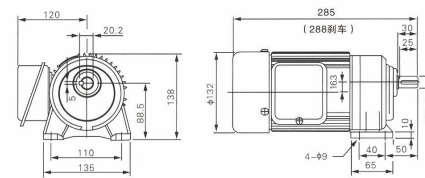
CH HORIZONTAL TYPE WITH ALUMINON PLATE 3PHASE(BRAKE)GEAR MOTOR

標準型 CH-18-200-3~10

Mormal Duty Type CH-18-200-3~10

輕負載縮框型 CH-18-200-15~90

Light load miniature frame CH-18-200-15~90

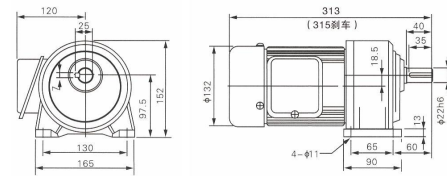


標準型 CH-22-200-15~90

Mormal Duty Type CH-22-200-15~90

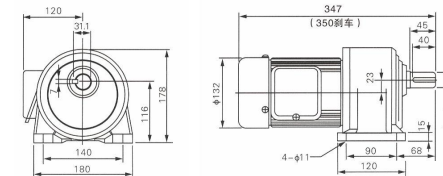
輕負載縮框型 CH-22-200-100~200

Light load miniature frame CH-22-200-100~200



標準型 CH-28-200-100~200

Mormal Duty Type CH-28-200-100~200



CV 型立式三相鋁殼 (剎車) 馬達減速機

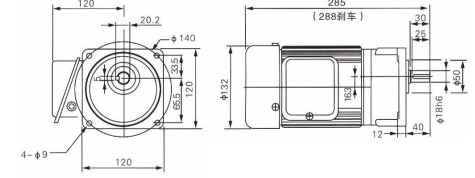
CV RTICAL TYPE WITH ALUMINON PLATE 3PHASE(BRAKE)GEAR MOTOR

標準型 CV-18-200-3~10

Mormal Duty Type CV-18-200-3~10

輕負載縮框型 CH-18-200-15~90

Light load miniature frame CH-18-200-15~90

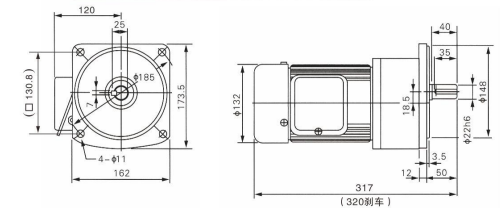


標準型 CV-22-200-15~90

Mormal Duty Type CV-22-200-15~90

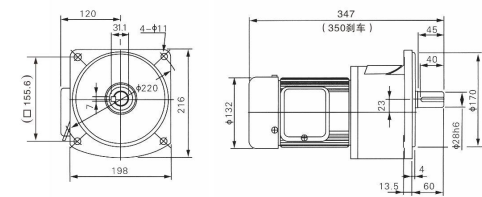
輕負載縮框型 CV-22-200-100~200

Light load miniature frame CV-22-200-100~200



標準型 CV-28-200-100~200

Mormal Duty Type CV-28-200-100~200



0.4KW



CH 型卧式三相鋁殼 (剎車) 馬達減速機

CH HORIZONTAL TYPE WITH ALUMINON PLATE 3PHASE(BRAKE)GEAR MOTOR

馬達尺寸圖 Dimensions chart

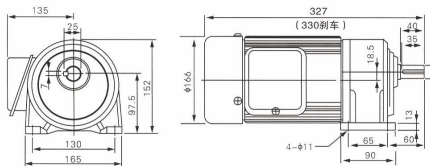
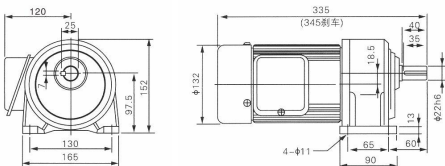
單位: mm

標準型 CH-22-400-3~10

Mormal Duty Type CH-22-400-3~10
輕負載縮框型 CH-22-400-15~90
Light load miniature frame CH-22-400-15~90

標準型 CH-22-400-3~10

Mormal Duty Type CH-22-400-3~10
輕負載縮框型 CH-22-400-15~90
Light load miniature frame CH-22-400-15~90

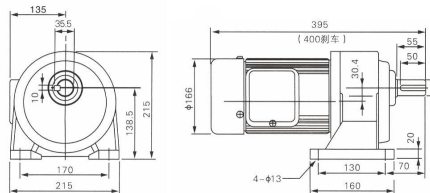
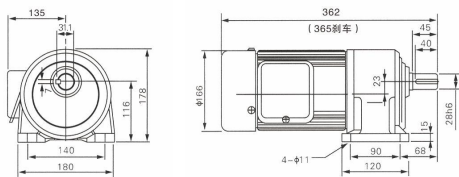


標準型 CH-28-400-15~90

Mormal Duty Type CH-28-400-15~90
輕負載縮框型 CH-28-400-100~200
Light load miniature frame CH-28-400-100~200

標準型 CH-32-400-100~200

Mormal Duty Type CH-32-400-100~200



注: 縮框型為輕負載, 無大慣性場合中使用。為不正當設計, 如非必要請勿使用
Note: miniature frame is light load, without being used in big inertia condition. This improper design is not allowed to use unless necessary.

0.4KW



CV 型立式三相鋁殼 (剎車) 馬達減速機

CV RTICAL TYPE WITH ALUMINON PLATE 3PHASE(BRAKE)GEAR MOTOR

馬達尺寸圖 Dimensions chart

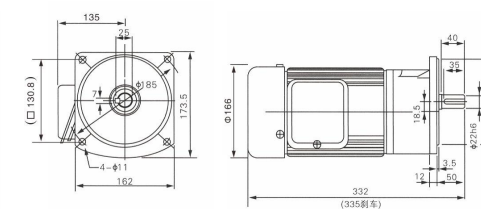
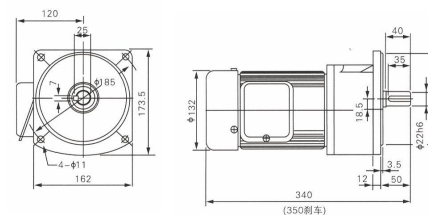
單位: mm

標準型 CV-22-400-3~10

Mormal Duty Type CV-22-400-3~10
輕負載縮框型 CV-22-400-15~90
Light load miniature frame CV-22-400-15~90

標準型 CV-22-400-3~10

Mormal Duty Type CV-22-400-3~10
輕負載縮框型 CV-22-400-15~90
Light load miniature frame CV-22-400-15~90

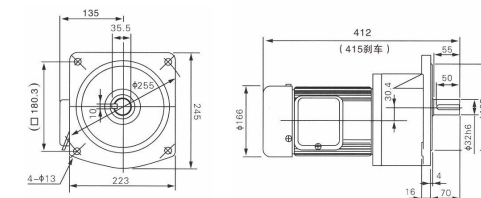
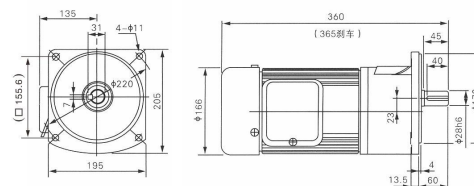


標準型 CV-28-400-15~90

Mormal Duty Type CV-28-400-15~90
輕負載縮框型 CV-28-400-100~200
Light load miniature frame CV-28-400-100~200

標準型 CV-32-400-100~200

Mormal Duty Type CV-32-400-100~200



注: 縮框型為輕負載, 無大慣性場合中使用。為不正當設計, 如非必要請勿使用
Note: miniature frame is light load, without being used in big inertia condition. This improper design is not allowed to use unless necessary.



0.55KW

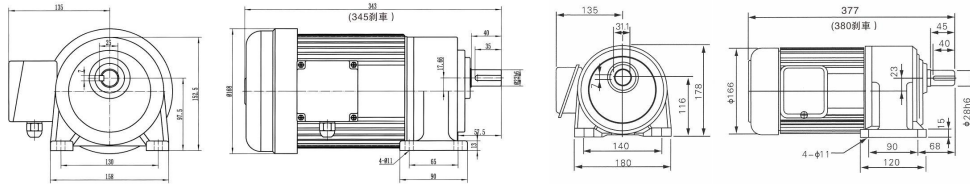
CH 型卧式三相鋁殼 (剎車) 馬達減速機
 CH HORIZONTAL TYPE WITH ALUMINON PLATE 3PHASE(BRAKE)GEAR MOTOR

馬達尺寸圖 Dimensions chart

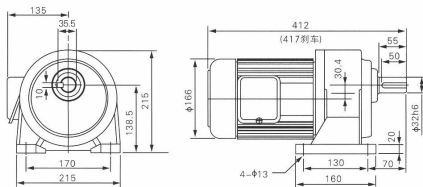
單位: mm

輕負載縮框型 **CH-22-550-3~25**
 Light load miniature frame CH-22-550-3~25

標準型 CH-28-550-3~25
 Normal Duty Type CH-28-550-3~25
 輕負載縮框型 CH-28-550-30~120
 Light load miniature frame CH-28-550-30~120



標準型 CH-32-550-30~120
 Normal Duty Type CH-32-550-30~120
 輕負載縮框型 CH-32-550-130~200
 Light load miniature frame CH-32-550-130~200



注: 縮框型為輕負載, 無大慣性場合中使用。為不正當設計, 如非必要請勿使用
 Note: miniature frame is light load, without being used in big inertia condition. This improper design is not allowed to use unless necessary.



0.55KW

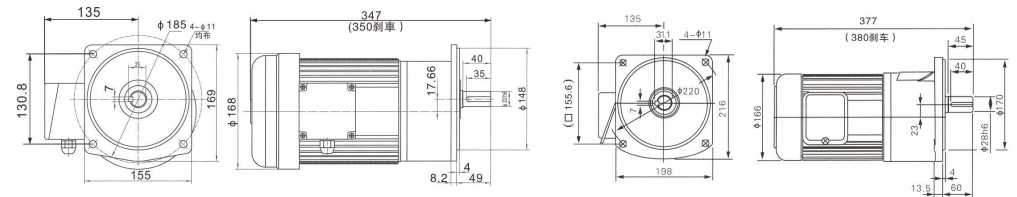
CV 型立式三相鋁殼 (剎車) 馬達減速機
 CV RTICAL TYPE WITH ALUMINON PLATE 3PHASE(BRAKE)GEAR MOTOR

馬達尺寸圖 Dimensions chart

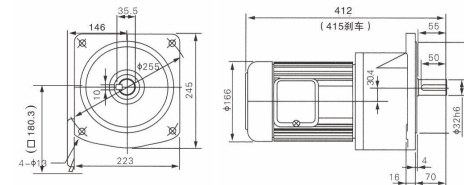
單位: mm

輕負載縮框型 **CV-22-550-3~25**
 Light load miniature frame CV-22-550-3~25

標準型 CV-28-550-3~25
 Normal Duty Type CV-28-550-3~25
 輕負載縮框型 CV-28-550-30~120
 Light load miniature frame CV-28-550-30~120



標準型 CV-32-550-30~120
 Normal Duty Type CV-32-550-30~120
 輕負載縮框型 CV-32-550-130~200
 Light load miniature frame CV-32-550-130~200



注: 縮框型為輕負載, 無大慣性場合中使用。為不正當設計, 如非必要請勿使用
 Note: miniature frame is light load, without being used in big inertia condition. This improper design is not allowed to use unless necessary.



0.75KW

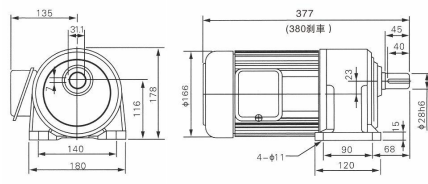
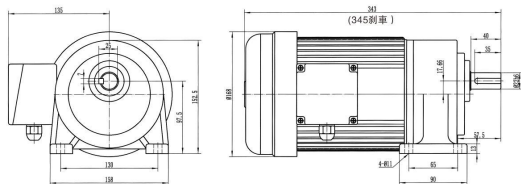
CH 型卧式三相鋁殼 (剎車) 馬達減速機
CH HORIZONTAL TYPE WITH ALUMINON PLATE 3PHASE(BRAKE)GEAR MOTOR

馬達尺寸圖 Dimensions chart

單位: mm

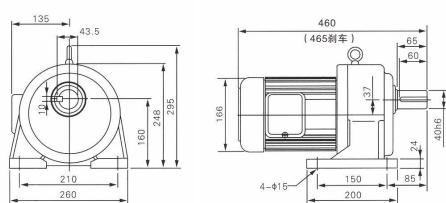
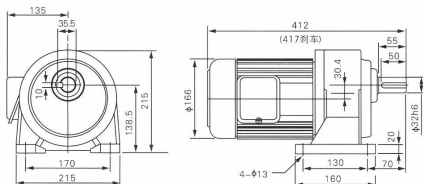
輕負載縮框型 CH-22-750-3~25
Light load miniature frame CH-22-750-3~25

標準型 CH-28-750-3~25
輕負載縮框型 CH-28-750-30~120
Light load miniature frame CH-28-750-30~120



標準型 CH-32-750-30~120
Normal Duty Type CH-32-750-30~120
輕負載縮框型 CH-32-750-130~200
Light load miniature frame CH-32-750-130~200

標準型 CH-40-750-130~200
Normal Duty Type CH-40-750-130~200



注: 縮框型為輕負載, 無大慣性場合中使用。為不正當設計, 如非必要請勿使用
Note: miniature frame is light load, without being used in big inertia condition. This improper design is not allowed to use unless necessary.



0.75KW

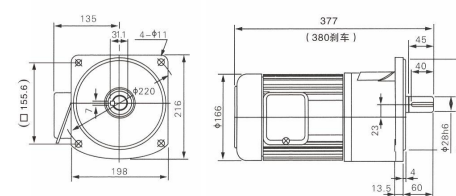
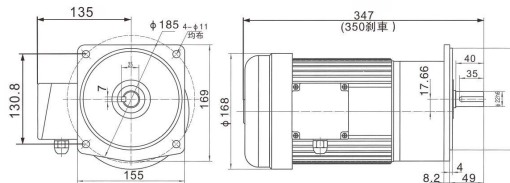
CV 型立式三相鋁殼 (剎車) 馬達減速機
CV RTICAL TYPE WITH ALUMINON PLATE 3PHASE(BRAKE)GEAR MOTOR

馬達尺寸圖 Dimensions chart

單位: mm

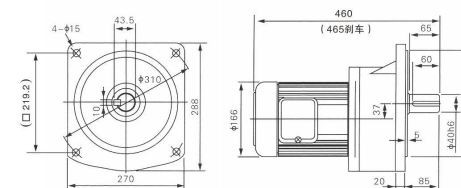
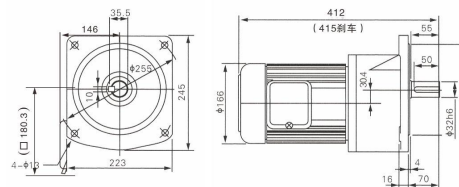
輕負載縮框型 CV-22-750-3~25
Light load miniature frame CV-22-750-3~25

標準型 CV-28-750-3~25
Normal Duty Type CV-28-750-3~25
輕負載縮框型 CV-28-750-30~120
Light load miniature frame CV-28-750-30~120



標準型 CV-32-750-30~120
Normal Duty Type CV-32-750-30~120
輕負載縮框型 CV-32-750-130~200
Light load miniature frame CV-32-750-130~200

標準型 CV-40-750-100~200
Normal Duty Type CV-40-750-100~200



注: 縮框型為輕負載, 無大慣性場合中使用。為不正當設計, 如非必要請勿使用
Note: miniature frame is light load, without being used in big inertia condition. This improper design is not allowed to use unless necessary.



1.5KW

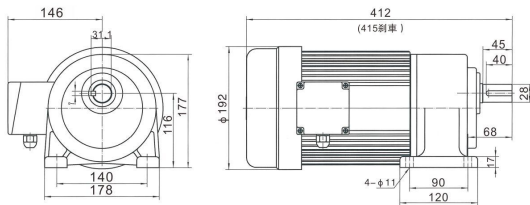
CH 型卧式三相鋁殼 (剎車) 馬達減速機
CH HORIZONTAL TYPE WITH ALUMINON PLATE 3PHASE(BRAKE)GEAR MOTOR

馬達尺寸圖 Dimensions chart

單位: mm

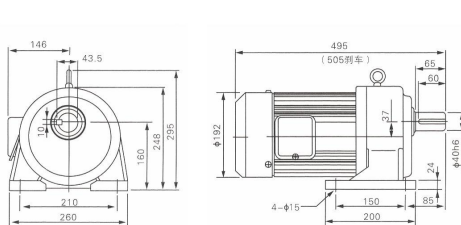
輕負載縮框型 **CH-28-1500-3~25**
Light load miniature frame CH-28-1500-3~25

標準型 **CH-32-1500-3~30**
Mormal Duty Type CH-32-1500-3~30
輕負載縮框型 CH-32-1500-40~90
Light load miniature frame CH-32-1500-40~90



標準型 **CH-40-1500-35~100**
Mormal Duty Type CH-40-1500-35~100
輕負載縮框型 CH-40-1500-110~200
Light load miniature frame CH-40-1500-110~200

標準型 **CH-50-1500-110~200**
Mormal Duty Type CH-50-1500-110~200



注: 縮框型為輕負載, 無大慣性場合中使用。為不正當設計, 如非必要請勿使用
Note: miniature frame is light load, without being used in big inertia condition. This improper design is not allowed to use unless necessary.



1.5KW

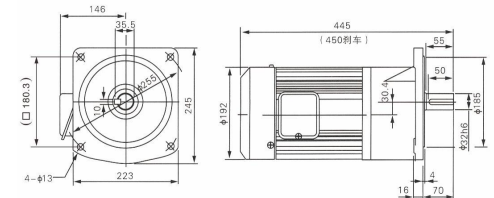
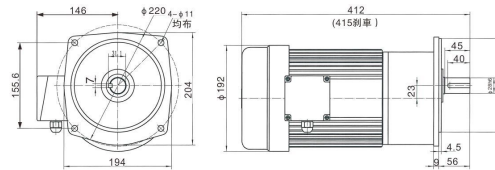
CV 型立式三相鋁殼 (剎車) 馬達減速機
CV RTICAL TYPE WITH ALUMINON PLATE 3PHASE(BRAKE)GEAR MOTOR

馬達尺寸圖 Dimensions chart

單位: mm

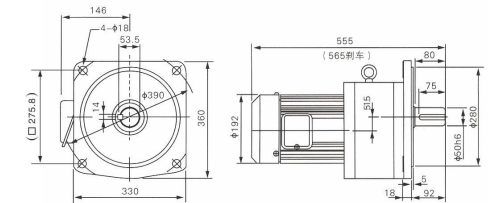
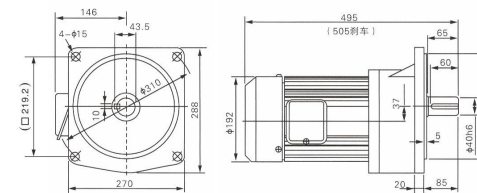
輕負載縮框型 **CV-28-1500-3~25**
Light load miniature frame CV-28-1500-3~25

標準型 **CV-32-1500-3~30**
Mormal Duty Type CV-32-1500-3~30
輕負載縮框型 CV-32-1500-40~100
Light load miniature frame CV-32-1500-40~100



標準型 **CV-40-1500-35~100**
Mormal Duty Type CV-40-1500-35~100
輕負載縮框型 CV-40-1500-110~200
Light load miniature frame CV-40-1500-110~200

標準型 **CV-50-1500-110~200**
Mormal Duty Type CV-50-1500-110~200



注: 縮框型為輕負載, 無大慣性場合中使用。為不正當設計, 如非必要請勿使用
Note: miniature frame is light load, without being used in big inertia condition. This improper design is not allowed to use unless necessary.



2.2KW

CH 型卧式三相鋁殼 (剎車) 馬達減速機

CH HORIZONTAL TYPE WITH ALUMINON PLATE 3PHASE(BRAKE)GEAR MOTOR

馬達尺寸圖 Dimensions chart

單位: mm

標準型 CH-40-2200-3~40

Mormal Duty Type CH-40-2200-3~40

輕負載縮框型 CH-40-2200-50~80

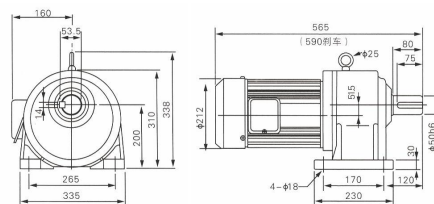
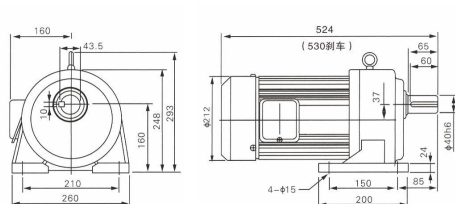
Light load miniature frame CH-40-2200-50~80

標準型 CH-50-2200-50~100

Mormal Duty Type CH-50-2200-50~100

輕負載縮框型 CH-50-2200-100~200

Light load miniature frame CH-50-2200-100~200



CV 型立式三相鋁殼 (剎車) 馬達減速機

CV RTICAL TYPE WITH ALUMINON PLATE 3PHASE(BRAKE)GEAR MOTOR

馬達尺寸圖 Dimensions chart

單位: mm

標準型 CV-40-2200-3~40

Mormal Duty Type CV-40-2200-3~40

輕負載縮框型 CV-40-2200-50~80

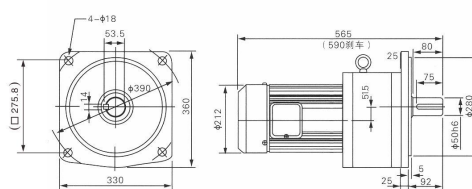
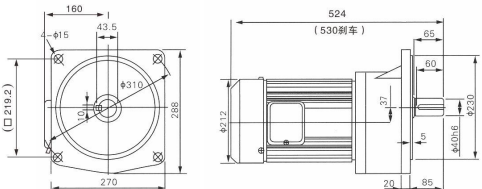
Light load miniature frame CV-40-2200-50~80

標準型 CV-50-2200-50~100

Mormal Duty Type CV-50-2200-50~100

輕負載縮框型 CV-50-2200-110~200

Light load miniature frame CV-50-2200-110~200



3.7KW

CH 型卧式三相鋁殼 (剎車) 馬達減速機

CH HORIZONTAL TYPE WITH ALUMINON PLATE 3PHASE(BRAKE)GEAR MOTOR

馬達尺寸圖 Dimensions chart

單位: mm

標準型 CH-40-3700-3~10

Mormal Duty Type CH-40-3700-3~10

輕負載縮框型 CH-40-15~60

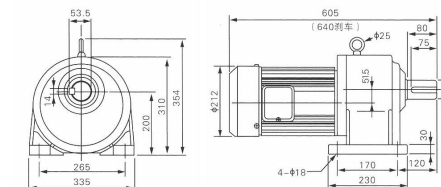
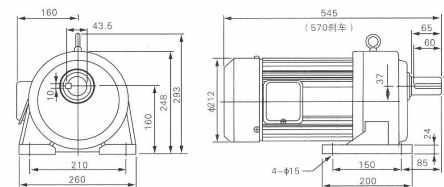
Light load miniature frame CH-40-15~60

標準型 CH-50-3700-15~60

Mormal Duty Type CH-50-3700-15~60

輕負載縮框型 CH-50-3700-70~200

Light load miniature frame CH-50-3700-70~200



CV 型立式三相鋁殼 (剎車) 馬達減速機

CV RTICAL TYPE WITH ALUMINON PLATE 3PHASE(BRAKE)GEAR MOTOR

馬達尺寸圖 Dimensions chart

單位: mm

標準型 CV-40-3700-3~10

Mormal Duty Type CV-40-3700-3~10

輕負載縮框型 CV-50-3700-15~60

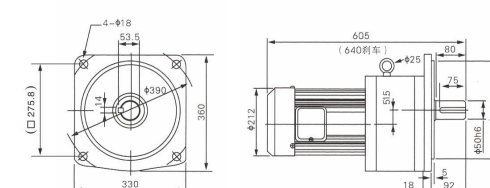
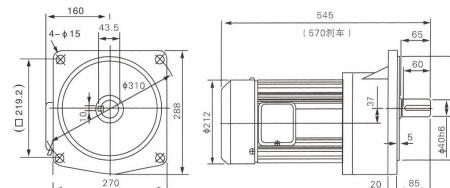
Light load miniature frame CV-50-3700-15~60

標準型 CV-50-3700-15~60

Mormal Duty Type CV-50-3700-15~60

輕負載縮框型 CV-50-3700-70~200

Light load miniature frame CV-50-3700-70~200

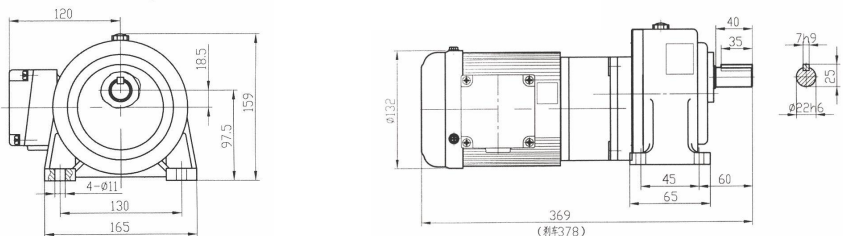


CH、CV組合型三相鋁殼（剎車）馬達減速機

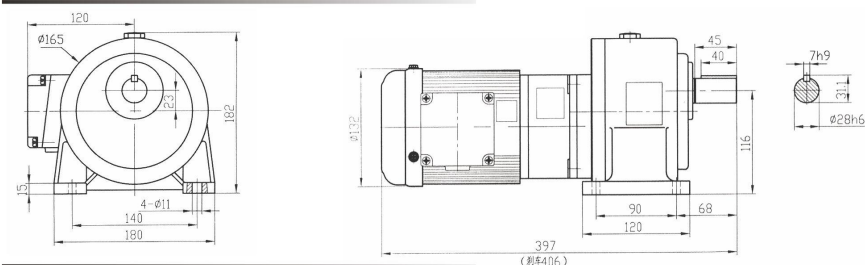
CH、CV combined three-phase aluminum (brake) motor speed reducer

馬達尺寸圖 Dimensions chart

輕負載縮框型 Light load miniature frame

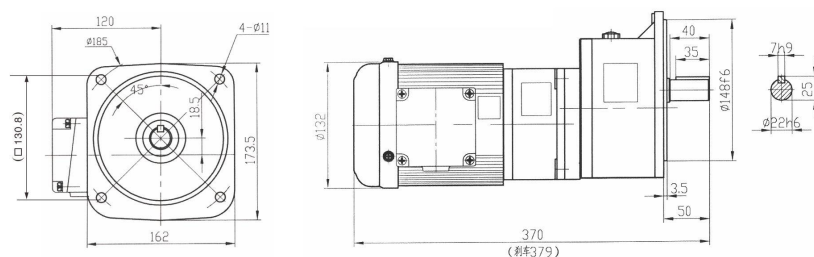


CH28+CH18-100-250~1800

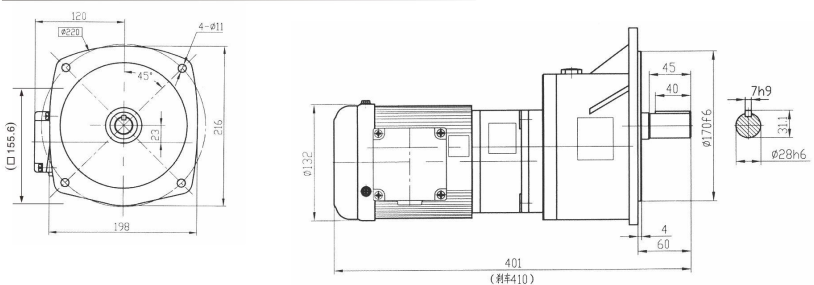


CV22+CV18-100-250~1800

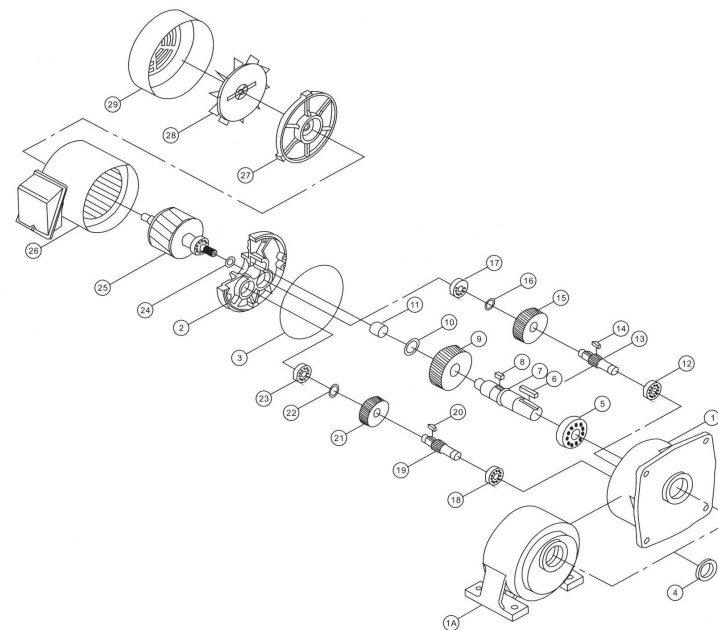
輕負載縮框型 Light load miniature frame



CV28+CV18-100-250~1800



產品結構圖 Product Structure Drawing

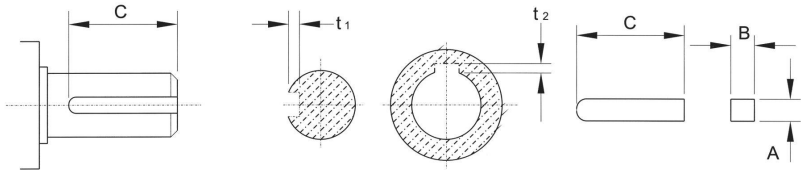


| 序號 Item | 品名 denomination |
|------------|---------------------|
| 1 | 本體 housing |
| 2 | 本體蓋 housing cover |
| 3 | O型環 o-ring |
| 4 | 出力軸油封 oil seal |
| 5 | 培林 ball bearing |
| 6 | 鍵 key |
| 7 | 出力軸 out put shaft |
| 8 | 鍵 key |
| 9 | 三段大齒輪 3rd main gear |
| 10 | 扣環 snap ring |

| 序號 Item | 品名 denomination |
|------------|---------------------|
| 11 | 培林 ball bearing |
| 12 | 培林 ball bearing |
| 13 | 三段大齒輪 3rd main gear |
| 14 | 鍵 key |
| 15 | 二段大齒輪 2rd main gear |
| 16 | 扣環 snap ring |
| 17 | 培林 ball bearing |
| 18 | 培林 ball bearing |
| 19 | 二段大齒輪 2rd main gear |
| 20 | 鍵 key |

| 序號 Item | 品名 denomination |
|------------|----------------------|
| 21 | 一段大齒輪 1rd main gear |
| 22 | 扣環 snap ring |
| 23 | 培林 ball bearing |
| 24 | 入力軸油封 oil seal |
| 25 | 馬達軸及轉子 motor shaft |
| 26 | 繞圈總成 coil assembly |
| 27 | 接線盒 wire box |
| 28 | 馬達後蓋 Rear cover motr |
| 29 | 風扇 Fan |
| 30 | 風罩 Fan cover |

鍵/鍵槽加工尺寸 (KEY/KEY WAY DIMENSION)



| 軸徑 SHAFT DIA | 鍵 KEY | | 鍵槽 KEYWAY | | | |
|-----------------|------------------------|------------------------|--|-----------------------------------|--|------------------------------------|
| | 新JIS規範 NEW JIS SPEC | 舊JIS規範 OLD JIS SPEC | 新JIS規範 NEW JIS SPEC (SHAFT/HOLE) | | 舊JIS規範 OLD JIS SPEC (SHAFT/HOLE) | |
| S | AxBxC | AxBxC | t1 | t2 | t1 | t2 |
| φ 11.0 | 4x4xC | 4x4xC | 2.5 ⁺⁰ _{+0.1} | 1.8 ⁺⁰ _{+0.1} | 2.5 ⁺⁰ _{+0.1} | 2.0 ⁺⁰ _{+0.1} |
| φ 14.0 | 5x5xC | 5x5xC | 3.0 ⁺⁰ _{+0.1} | 2.3 ⁺⁰ _{+0.1} | 3.0 ⁺⁰ _{+0.1} | 2.5 ⁺⁰ _{+0.1} |
| φ 18.0 | 6x6xC | 6x6xC | 3.5 ⁺⁰ _{+0.1} | 2.8 ⁺⁰ _{+0.1} | 3.5 ⁺⁰ _{+0.1} | 3.0 ⁺⁰ _{+0.1} |
| φ 19.0 | 6x6xC | 6x6xC | 3.5 ⁺⁰ _{+0.1} | 2.8 ⁺⁰ _{+0.1} | 3.5 ⁺⁰ _{+0.1} | 3.0 ⁺⁰ _{+0.1} |
| φ 22.0 | 8x7xC | 7x7xC | 4.0 ⁺⁰ _{+0.1} | 3.3 ⁺⁰ _{+0.1} | 4.0 ⁺⁰ _{+0.1} | 3.5 ⁺⁰ _{+0.1} |
| φ 24.0 | 8x7xC | 8x7xC | 4.0 ⁺⁰ _{+0.2} | 3.3 ⁺⁰ _{+0.2} | 4.0 ⁺⁰ _{+0.2} | 3.5 ⁺⁰ _{+0.2} |
| φ 28.0 | 8x7xC | 8x7xC | 4.0 ⁺⁰ _{+0.2} | 3.3 ⁺⁰ _{+0.2} | 4.0 ⁺⁰ _{+0.2} | 3.5 ⁺⁰ _{+0.2} |
| φ 32.0 | 10x8xC | 10x8xC | 5.0 ⁺⁰ _{+0.2} | 3.3 ⁺⁰ _{+0.2} | 4.5 ⁺⁰ _{+0.2} | 4.0 ⁺⁰ _{+0.2} |
| φ 40.0 | 12x8xC | 12x8xC | 5.0 ⁺⁰ _{+0.2} | 3.3 ⁺⁰ _{+0.2} | 4.5 ⁺⁰ _{+0.2} | 4.0 ⁺⁰ _{+0.2} |
| φ 45.0 | 14x9xC | 12x8xC | 5.5 ⁺⁰ _{+0.2} | 3.8 ⁺⁰ _{+0.2} | 4.5 ⁺⁰ _{+0.2} | 4.0 ⁺⁰ _{+0.2} |
| φ 50.0 | 14x9xC | 15x10xC | 5.5 ⁺⁰ _{+0.2} | 3.8 ⁺⁰ _{+0.2} | 5.0 ⁺⁰ _{+0.2} | 5.0 ⁺⁰ _{+0.2} |
| φ 55.0 | 16x10xC | 15x10xC | 6.0 ⁺⁰ _{+0.2} | 4.3 ⁺⁰ _{+0.2} | 5.0 ⁺⁰ _{+0.2} | 5.5 ⁺⁰ _{+0.2} |
| φ 65.0 | 18x11xC | 18x12xC | 7.0 ⁺⁰ _{+0.2} | 4.4 ⁺⁰ _{+0.2} | 6.0 ⁺⁰ _{+0.2} | 6.5 ⁺⁰ _{+0.2} |
| φ 75.0 | 20x12xC | 20x13xC | 7.5 ⁺⁰ _{+0.2} | 4.9 ⁺⁰ _{+0.2} | 7.0 ⁺⁰ _{+0.2} | 6.5 ⁺⁰ _{+0.2} |
| φ 90.0 | 25x14xC | 24x16xC | 9.0 ⁺⁰ _{+0.2} | 5.4 ⁺⁰ _{+0.2} | 8.0 ⁺⁰ _{+0.2} | 8.5 ⁺⁰ _{+0.2} |
| φ 100.0 | 28x16xC | 28x18xC | 10.0 ⁺⁰ _{+0.2} | 6.4 ⁺⁰ _{+0.2} | 9.0 ⁺⁰ _{+0.2} | 10.0 ⁺⁰ _{+0.2} |
| φ 115.0 | 28x16xC | 28x18xC | 10.0 ⁺⁰ _{+0.2} | 6.4 ⁺⁰ _{+0.2} | 9.0 ⁺⁰ _{+0.2} | 10.0 ⁺⁰ _{+0.2} |

相關計算 CALCULATE DATA

(A) 連結系數表(CONNECTION FACTOR)

| | |
|--------------|------|
| 鏈輪 SPROCKET | 1.00 |
| 齒輪 GEAR | 1.25 |
| 三角皮帶BELT | 1.50 |
| 平皮帶FLAT BELT | 2.50 |

(B) 荷重系數表(SERVICE FACTOR)

| 減速機負載等級 LOAD GRADE | 每日運轉時間(HRS) DAILY OPERATING HOURS | | | |
|------------------------------|--------------------------------------|------|------|-------|
| | 1-2 | 3-8 | 9-15 | 16-24 |
| 均一負載 UNIFORM LOAD | 0.80 | 0.90 | 1.20 | 1.30 |
| 中級重擊負載 MEDIUM IMPACT LOAD | 1.00 | 1.20 | 1.30 | 1.50 |
| 重級重擊負載 HEAVY IMPACT LOAD | 1.20 | 1.50 | 1.75 | 2.00 |

(C) 符號說明(CODE DETAILS)

| | | |
|-------------------------------|-------------------------------------|---|
| V=速度SPEED (M/MIN) | E=效率EFFICIENCY (%) | 1 INCH=2.54cm |
| I=減速比 RATIO | N2=出力軸轉速(RPM) OUTPUT SHAFT SPEED | 1 FOOT=12 INCH |
| T=輸出扭力(KG-M) OUTPUT TORQUE | D=滾輪直徑(mm) ROLLER DIAMETER | 1KW=1000W 1KW=1.34HP |
| K=連結系數 CONNECTING FACTOR | R=滾輪半徑(mm) ROLLER RADIUS | 1KG-M=7.233 FT-LB 1KG-M=86.8 IN-LB |
| F=荷重系數 SERVICE FACTOR | KW1(HP1)=入力馬力 INPUT CAPACITY | 1KG=2.2 LB 1 LB=0.4536KG |
| W=荷重(KG) LOAD | KW2(HP2)=輸出馬力 OUTPUT CAPACITY | N1=入力回轉速 (r/min) INPUT SHAFT ROTATION SPEED |

(D) 基本傳動公式(BASIC FORMULAR)

| | |
|-----------------------------------|--------------|
| 減速比 RATIO | I=N2/N1 |
| 回轉速度 ROTATION SPEED(r/min) | N2=V/πD |
| 輸出扭矩 OUTPUT TORQUE (KG-M) | T=WxRxK |
| 輸入馬力 INPUT HORSEPOWER(公制 METRIC) | KW1=NxTx974 |
| 輸入馬力 INPUT HORSEPOWER(英制 INCH) | HP1=NxT/716 |
| 輸出馬力 OUTPUT HORSEPOWER(公制 METRIC) | KW2=KW1x F/E |
| 輸出馬力 OUTPUT HORSEPOWER(英制 INCH) | HP2=HP1x F/E |

(E) 減速機水平輸送場合符號說明及傳動公式(DESCRIPTION AND TRANSMISSION)

| | | | |
|-----------------------------------|--|---|--------|
| 輸送速度(r/min) TRANSMISSION SPEED | V | 輸送帶摩擦係數 BELT FRICTION COEFFICIENT | μ |
| 滾輪直徑(mm) ROLLER DIAMETER | D | 鏈輪傳動效率 (%) CHAIN DRIVE EFFICIENCY | η1 |
| 載重量(KG) LOAD | W | 減速機傳動效率 (%) REDUCER TRANSMISSION | η2=0.9 |
| 出力軸主動鏈輪齒數 OUTPUT SHAFT TEETH | T1 | 輸送機被動鏈輪齒數 CONVEYOR PASSIVE SPROCKET TEETH | T2 |
| 輸送帶所需扭力(KG-M) BELT TORQUE | T1 | 減速機減速比 REDUCER RATIO | I |
| 減速機扭力(KG-M) REDUCER TORQUE | T2 | 減速機出力軸回轉速 (r/min) REDUCER OUTPUT SHAFT ROTATION SPEED | N2 |
| 荷重系數 SERVICE FACTOR | F (查4-13表 (B)) F (FIND 4-13 TABLE(B)) | | |

| | |
|---|----------------------------------|
| 輸送機回轉速(r/min) TRANSMISSION SPEED | N1=V/πD |
| 減速機出力軸回轉速 (r/min) REDUCER OUTPUT SHAFT ROTATION SPEED | N2=N2X(T2/T1) |
| 減速機減速比 (1) REDUCER RATIO | 50HZ I=1500/N2 60HZ I=1800/N2 |
| 輸送帶所需扭力(KG-M) BELT TORQUE | T1=WxD/2Xμ/η1 |
| 減速機所需扭力(KG-M) REDUCER TORQUE | T2=t1X(t1/t2)/η2 |
| 考慮荷重系數減速馬達扭力 GEAR MOTOR TORQUE(SERVICE FACTOR BE CONSIDER) | T3=t3xF |
| 馬力(HP) CAPACITY | HP=t3xN2/716.2 |

4-2 輸出扭矩表 OUTPUT TORQUE

標準型 (NORMAL DUTY TYPE)

KG-M

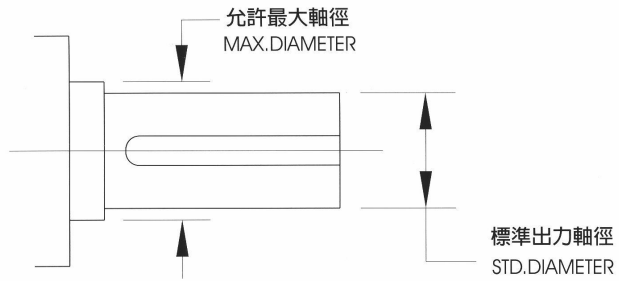
| 減速比 RATIO | 輸出轉速 OUTPUT R.P.M | | 輸出扭矩 OUTPUT TORQUE | | | | | | | | | | | | | |
|--------------|-------------------------|-----|--------------------|------|-------|------|-------|------|--------|------|-------|------|-------|------|-------|-------|
| | | | 0.1KW | | 0.2KW | | 0.4KW | | 0.75KW | | 1.5KW | | 2.2KW | | 3.7KW | |
| | HZ | | | | | | | | | | | | | | | |
| | 50 | 60 | 50 | 60 | 50 | 60 | 50 | 60 | 50 | 60 | 50 | 60 | 50 | 60 | 50 | 60 |
| 3 | 500 | 600 | 0.19 | 0.16 | 0.37 | 0.31 | 0.70 | 0.60 | 1.30 | 1.10 | 2.60 | 2.20 | 3.80 | 3.20 | 6.00 | 5.50 |
| 5 | 300 | 360 | 0.31 | 0.26 | 0.62 | 0.52 | 1.20 | 1.00 | 2.20 | 1.90 | 4.50 | 3.80 | 6.72 | 5.60 | 11.0 | 10.0 |
| 10 | 150 | 180 | 0.62 | 0.52 | 1.24 | 1.04 | 2.40 | 2.00 | 4.50 | 3.80 | 9.10 | 7.60 | 13.7 | 11.2 | 22.0 | 20.0 |
| 15 | 100 | 120 | 0.91 | 0.76 | 1.80 | 1.50 | 3.60 | 3.00 | 6.80 | 5.70 | 13.5 | 11.3 | 20.1 | 16.8 | 32.6 | 29.8 |
| 20 | 75 | 90 | 1.20 | 1.00 | 2.40 | 2.00 | 4.80 | 4.00 | 9.00 | 7.50 | 18.1 | 15.1 | 26.8 | 22.4 | 43.6 | 36.0 |
| 25 | 60 | 72 | 1.40 | 1.20 | 3.00 | 2.50 | 6.00 | 5.00 | 11.2 | 9.40 | 22.6 | 18.9 | 33.6 | 28.0 | 53.9 | 49.53 |
| 30 | 50 | 60 | 1.80 | 1.50 | 3.60 | 3.00 | 7.20 | 6.00 | 13.5 | 11.3 | 27.1 | 22.6 | 40.3 | 33.6 | 64.7 | 58.8 |
| 40 | 37 | 45 | 2.20 | 1.90 | 4.60 | 3.90 | 9.30 | 7.80 | 17.5 | 14.6 | 34.9 | 29.1 | 52.0 | 43.4 | 86.3 | 78.4 |
| 45 | 33 | 40 | 2.70 | 2.20 | 5.40 | 4.40 | 10.9 | 9.10 | 20.6 | 17.0 | 41.1 | 34.0 | 59.8 | 49.6 | 98.5 | 81.7 |
| 50 | 30 | 36 | 2.80 | 2.40 | 5.70 | 4.80 | 11.6 | 9.70 | 21.9 | 18.3 | 43.6 | 36.4 | 65.1 | 54.3 | 107 | 97.0 |
| 60 | 25 | 30 | 3.40 | 2.90 | 6.90 | 5.80 | 13.9 | 11.6 | 26.2 | 21.9 | 52.4 | 43.7 | 78.1 | 65.1 | 127 | 115 |
| 70 | 21 | 25 | 4.30 | 3.60 | 8.00 | 6.80 | 16.2 | 13.5 | 31.5 | 26.3 | 62.4 | 52.0 | 92.5 | 77.1 | | |
| 80 | 19 | 23 | 4.80 | 4.00 | 9.20 | 7.70 | 18.4 | 15.4 | 35.5 | 29.6 | 70.8 | 59.0 | 105 | 87.5 | | |
| 90 | 17 | 20 | 5.20 | 4.40 | 10.3 | 8.60 | 20.7 | 17.3 | 39.3 | 32.8 | 77.1 | 64.3 | 113 | 94.3 | | |
| 100 | 15 | 18 | 5.80 | 4.90 | 11.5 | 9.60 | 23.0 | 19.2 | 43.2 | 36.0 | 83.7 | 69.8 | 126 | 105 | | |
| 120 | 12 | 15 | 6.90 | 5.80 | 13.8 | 11.5 | 27.7 | 23.1 | 51.8 | 43.2 | 101 | 83.7 | | | | |
| 140 | 11 | 13 | 8.00 | 6.70 | 16.0 | 13.4 | 32.0 | 26.7 | 59.7 | 49.8 | 116 | 96.8 | | | | |
| 160 | 9 | 11 | 9.10 | 7.60 | 18.3 | 15.3 | 36.3 | 30.3 | 68.0 | 56.7 | 132 | 110 | | | | |
| 180 | 8 | 10 | 10.3 | 8.60 | 20.7 | 17.3 | 40.8 | 34.0 | 76.8 | 64.0 | 148 | 123 | | | | |
| 200 | 7 | 9 | 11.6 | 9.70 | 22.9 | 19.1 | 43.2 | 36.0 | 82.8 | 69.0 | | | | | | |

4-3 出力轉懸垂荷重 OVERHUNG LOAD

KG

| 減速比 RATIO | 輸出轉速 OUTPUT R.P.M | | 0.1KW | | 0.2KW | | 0.4KW | | 0.75KW | | 1.75KW | | 2.2KW | | 3.7KW | |
|--------------|-------------------------|-----|-------|-----|-------|-----|-------|-----|--------|------|--------|-----|-------|------|-------|------|
| | | | 50 | 60 | 50 | 60 | 50 | 60 | 50 | 60 | 50 | 60 | 50 | 60 | 50 | 60 |
| | HZ | | | | | | | | | | | | | | | |
| | 50 | 60 | 50 | 60 | 50 | 60 | 50 | 60 | 50 | 60 | 50 | 60 | 50 | 60 | 50 | 60 |
| 3 | 500 | 600 | 30 | 25 | 30 | 25 | 54 | 45 | 60 | 50 | 145 | 130 | 165 | 150 | 200 | 180 |
| 5 | 300 | 360 | 36 | 30 | 36 | 30 | 78 | 70 | 85 | 75 | 165 | 150 | 210 | 180 | 270 | 225 |
| 10 | 150 | 180 | 70 | 60 | 70 | 60 | 150 | 130 | 180 | 150 | 280 | 250 | 430 | 360 | 570 | 550 |
| 15 | 100 | 120 | 110 | 90 | 110 | 100 | 175 | 160 | 165 | 160 | 355 | 348 | 490 | 450 | 780 | 750 |
| 20 | 75 | 90 | 150 | 125 | 135 | 125 | 190 | 170 | 175 | 170 | 369 | 365 | 540 | 500 | 850 | 830 |
| 25 | 60 | 72 | 155 | 140 | 150 | 140 | 210 | 180 | 185 | 180 | 450 | 430 | 650 | 630 | 1100 | 1050 |
| 30 | 50 | 60 | 160 | 150 | 170 | 165 | 235 | 220 | 415 | 400 | 480 | 450 | 690 | 650 | 1200 | 1100 |
| 40 | 38 | 45 | 160 | 160 | 180 | 180 | 270 | 260 | 430 | 420 | 580 | 550 | 710 | 670 | 1280 | 1200 |
| 45 | 33 | 40 | 170 | 170 | 180 | 180 | 335 | 328 | 440 | 430 | 590 | 570 | 820 | 780 | 1300 | 1250 |
| 50 | 30 | 36 | 170 | 170 | 180 | 180 | 350 | 335 | 450 | 440 | 600 | 580 | 850 | 820 | 1400 | 1350 |
| 60 | 25 | 30 | 180 | 180 | 180 | 180 | 350 | 350 | 450 | 450 | 630 | 610 | 900 | 900 | 1400 | 1400 |
| 70 | 21 | 25 | 180 | 180 | 180 | 180 | 350 | 350 | 460 | 460 | 670 | 650 | 1100 | 1100 | | |
| 80 | 18 | 22 | 180 | 180 | 180 | 180 | 350 | 350 | 460 | 460 | 680 | 680 | 1100 | 1100 | | |
| 90 | 16 | 20 | 180 | 180 | 180 | 180 | 350 | 350 | 500 | 500 | 850 | 850 | 1200 | 1200 | | |
| 100 | 15 | 18 | 200 | 200 | 250 | 250 | 380 | 380 | 590 | 590 | 900 | 900 | 1200 | 1200 | | |
| 120 | 12 | 15 | 200 | 200 | 320 | 320 | 390 | 390 | 640 | 640 | 920 | 920 | | | | |
| 140 | 11 | 13 | 200 | 200 | 320 | 320 | 400 | 400 | 679 | 679 | 920 | 920 | | | | |
| 150 | 10 | 12 | 220 | 220 | 330 | 330 | 420 | 420 | 679 | 679 | 950 | 950 | | | | |
| 160 | 9 | 11 | 220 | 220 | 330 | 330 | 420 | 420 | 700 | 700 | 950 | 950 | | | | |
| 180 | 8 | 10 | 240 | 240 | 350 | 350 | 430 | 430 | 720 | 720 | 980 | 980 | | | | |
| 200 | 7 | 9 | 240 | 240 | 350 | 350 | 430 | 430 | 720 | 720 | | | | | | |
| 1/250~1/1800 | | | 300 | 300 | 480 | 480 | 720 | 720 | 1400 | 1400 | | | | | | |

4-4 出力軸允許最大軸徑 AVAILABLE MAX OUTPUT SHAFT DIAMETER



| 本體框號 HOUSING CODE | 標準出力軸徑 STD OUTPUT SHAFT | 出力軸培林 OUTPUT SHAFT BEARING | 允許最大軸徑 MAX AVAILABLE SHAFT DIAMETER |
|----------------------|----------------------------|-------------------------------|--|
| 1# | φ 18.0 | 6004 | φ 20.0 |
| 2# | φ 22.0 | 6205 | φ 25.0 |
| 3# | φ 28.0 | 6206 | φ 30.0 |
| 4# | φ 32.0 | 6207 | φ 35.0 |
| 5# | φ 40.0 | 6209 | φ 45.0 |
| 5# | φ 45.0 | 6209 | φ 45.0 |
| 6# | φ 50.0 | 6211 | φ 55.0 |

4-5 出力軸軸徑對照表 OUTPUT SHAFT DIAMETER TABLE

標準型 (NORMAL DUTY TYPE)

| 馬力 CAPACITY | 1/8HP (100W) | 1/4HP (200W) | 1/2HP (400W) | 1HP (750W) | 2HP (1500W) | 3HP (2200W) | 5HP (3700W) |
|----------------|-----------------|-----------------|-----------------|---------------|----------------|----------------|----------------|
| 速比 RATIO | | | | | | | |
| 3 | 18 | 18 | 22 | 28 | 32 | 40 | 40 |
| 5 | 18 | 18 | 22 | 28 | 32 | 40 | 40 |
| 10 | 18 | 18 | 22 | 28 | 32 | 40 | 40 |
| 15 | 18 | 22 | 28 | 28 | 32 | 40 | 40 |
| 20 | 18 | 22 | 28 | 28 | 32 | 40 | 50 |
| 25 | 18 | 22 | 28 | 28 | 32 | 40 | 50 |
| 30 | 18 | 22 | 28 | 32 | 32 | 40 | 50 |
| 40 | 18 | 22 | 28 | 32 | 40 | 40 | 50 |
| 45 | 18 | 22 | 28 | 32 | 40 | 50 | 50 |
| 50 | 18 | 22 | 28 | 32 | 40 | 50 | 50 |
| 60 | 22 | 22 | 28 | 32 | 40 | 50 | 50 |
| 70 | 22 | 22 | 28 | 32 | 40 | 50 | |
| 80 | 22 | 22 | 28 | 32 | 40 | 50 | |
| 90 | 22 | 22 | 28 | 32 | 40 | 50 | |
| 100 | 22 | 28 | 32 | 32 | 40 | 50 | |
| 120 | 22 | 28 | 32 | 32 | 50 | | |
| 140 | 22 | 28 | 32 | 40 | 50 | | |
| 150 | 22 | 28 | 32 | 40 | *50 | | |
| 160 | 22 | 28 | 32 | 40 | *50 | | |
| 180 | 22 | 28 | 32 | 40 | *50 | | |
| 200 | 22 | 28 | 32 | 40 | | | |
| 250-1800 | 28 | 32 | 40 | 50 | | | |

輕負載縮框型 LIGHT DUTY TYPE

| 馬力 CAPACITY | 1/8HP (100W) | 1/4HP (200W) | 1/2HP (400W) | 1HP (750W) | 2HP (1500W) | 3HP (2200W) | 5HP (3700W) |
|----------------|-----------------|-----------------|-----------------|---------------|----------------|----------------|----------------|
| 速比 RATIO | | | | | | | |
| 3 | | | | 22 | 28 | | |
| 5 | | | | 22 | 28 | | |
| 10 | | | | 22 | 28 | | |
| 15 | | 18 | 22 | 22 | 28 | | 40 |
| 20 | | | 22 | 22 | 28 | | 40 |
| 25 | | | 22 | 22 | 28 | | 40 |
| 30 | | 18 | 22 | 28 | 28 | | 40 |
| 40 | | 18 | 22 | 28 | 32 | | 40 |
| 45 | | 18 | 22 | 28 | 32 | | 40 |
| 50 | | 18 | 22 | 28 | 32 | 40 | 40 |
| 60 | 18 | 18 | 22 | 28 | 32 | 40 | 40 |
| 70 | 18 | 18 | 22 | 28 | 32 | 40 | |
| 80 | 18 | 18 | 22 | 28 | 32 | 40 | |
| 90 | 18 | 18 | 22 | 28 | 32 | | |
| 100 | 18 | 22 | 28 | 28 | 32 | | |
| 120 | 18 | 22 | 28 | 28 | 40 | | |
| 140 | 18 | 22 | 28 | 32 | 40 | | |
| 150 | 18 | 22 | 28 | 32 | 40 | | |
| 160 | 18 | 22 | 28 | 32 | 40 | | |
| 180 | *18 | 22 | 28 | 32 | *40 | | |
| 200 | *18 | 22 | *28 | *32 | | | |
| 250-1800 | 22 | 28 | 32 | 40 | | | |

備注
REMARK

- 縮框機型為不正當設計使用，如非必要請勿選用
LIGHT DUTY TYPE ARE NOT AVAILABLE FOR STANDARD APPLICATION DESIGN, IT ONLY SUITABLE FOR SPECIAL PROJECT DESIGN
- 僅就馬達部份提供一年保固，PROVIDE ONE YEAR GUARANTEE FOR MOTOR ONLY
- *為達到此速比時必須搭配6P馬達使用。*IT NEED TO USE 6 POLE MOTOR TO REACH CEFTAIN RATIO.

4-6公稱及實際速比 (NORMAL RATIO&ACTUAL RATIO)

標準型 (NORMAL DUTY TYPE)

| 公稱速比 NORMAL RATIO | 低段實際減速比 ACTUAL RATIO | | | | | | |
|----------------------|---|--------|--------|--------|-----------|-------|-------|
| | 0.1KW | 0.2KW | 0.4KW | 0.75KW | 1.5KW | 2.2KW | 3.7KW |
| 3 | 3.04 | 3.04 | 2.99 | 2.92 | 3.05 | 3.25 | 3.25 |
| 5 | 5.07 | 5.07 | 5.14 | 5.03 | 5.01 | 5.19 | 5.19 |
| 10 | 10.03 | 10.03 | 10.01 | 9.96 | 10.41 | 9.48 | 9.48 |
| 15 | 15.09 | 15.60 | 15.61 | 15.31 | 14.33 | 15.71 | 14.62 |
| 20 | 19.90 | 19.90 | 20.69 | 19.49 | 19.35 | 19.38 | 19.58 |
| 25 | 26.81 | 25.65 | 26.35 | 25.27 | 25.08 | 23.71 | 24.54 |
| 30 | 30.06 | 32.77 | 29.81 | 30.00 | 29.38 | 29.25 | 30.87 |
| 40 | 40.33 | 40.46 | 39.11 | 40.99 | 43.72 | 41.83 | 41.77 |
| 50 | 50.59 | 49.42 | 50.21 | 51.24 | 50.96 | 50.51 | 50.51 |
| 60 | 58.64 | 63.02 | 61.36 | 58.10 | 61.83 | 58.48 | 58.48 |
| 70 | 71.62 | 71.31 | 71.15 | 72.00 | 72.87 | 67.65 | |
| 80 | 80.19 | 81.23 | 77.13 | 79.99 | 80.30 | 81.18 | |
| 90 | 91.34 | 92.69 | 94.27 | 90.00 | 90.54 | 93.99 | |
| 100 | 102.27 | 104.62 | 103.70 | 99.99 | 103.05 | 98.17 | |
| 110 | | 109.02 | | 108.00 | ***109.20 | | |
| 115 | 115.71 | | | | 117.00 | | |
| 120 | 117.73 | 123.33 | 116.66 | 120.00 | 122.20 | | |
| 130 | 131.81 | 133.25 | 129.62 | 133.79 | ***126.30 | | |
| 140 | 134.81 | 141.32 | 140.00 | | | | |
| 150 | 150.41 | 150.74 | | 150.41 | ***151.56 | | |
| 160 | 162.73 | 162.86 | 155.55 | 160.70 | ***158.30 | | |
| 170 | 168.40 | 172.73 | | | ***175.50 | | |
| 180 | 182.19 | 182.32 | 175.00 | 180.01 | ***183.30 | | |
| 200 | 192.83 | 193.37 | 194.44 | 216.22 | | | |
| 備注 REMARK | ***為達到此速比時，必需搭配6P馬達使用 ***IT NEED USE 6 POLE MOTOR TO REACH CERTAIN RATIO | | | | | | |

| 公稱速比 NORMAL RATIO | 低段實際減速比 ACTUAL RATIO | | | | | | |
|----------------------|----------------------|---------|---------|---------|-------|-------|-------|
| | 0.1KW | 0.2KW | 0.4KW | 0.75KW | 1.5KW | 2.2KW | 3.7KW |
| 250 | 258.02 | 267.07 | 250.05 | 244.62 | | | |
| | 306.03 | 304.74 | 282.89 | 299.84 | | | |
| 350 | 354.98 | 367.70 | 357.57 | 359.81 | | | |
| 400 | 389.75 | 377.61 | 401.21 | 381.87 | | | |
| 450 | 468.00 | 435.77 | 468.71 | 458.24 | | | |
| 500 | 528.35 | 496.40 | 510.97 | 518.42 | | | |
| 600 | 600.78 | 566.42 | 605.37 | 602.14 | | | |
| 700 | 700.07 | 704.66 | 701.91 | 703.57 | | | |
| 800 | 825.28 | 805.32 | 810.36 | 814.66 | | | |
| 900 | 922.95 | 894.80 | 893.94 | 921.64 | | | |
| 1000 | 1008.09 | 1036.04 | 1014.40 | 985.00 | | | |
| 1100 | 1097.35 | 1118.51 | 1102.53 | 1114.35 | | | |
| 1200 | 1224.82 | 1172.26 | 1214.91 | 1199.37 | | | |
| 1300 | 1329.80 | 1291.19 | 1298.22 | | | | |
| 1400 | 1374.44 | 1393.98 | | | | | |
| 1500 | 1517.32 | 1540.55 | 1484.89 | 1492.43 | | | |
| 1600 | 1582.76 | 1613.99 | 1574.88 | 1612.36 | | | |
| 1650 | | | | | | | |
| 1700 | 1711.73 | 1685.55 | 1728.08 | | | | |
| 1800 | 1775.20 | 1838.52 | 1821.00 | 1832.99 | | | |

輕負載縮框型 LIGHT DUTY

| 公稱速比 NORMAL RATIO | 低段實際減速比 ACTUAL RATIO | | | | | | |
|----------------------|---|--------|--------|-----------|-----------|-------|-------|
| | 0.1kW | 0.2kw | 0.4KW | 0.75KW | 1.5KW | 2.2KW | 3.7KW |
| 3 | | | | 2.99 | 2.93 | | |
| 5 | | | | 5.14 | 5.03 | | |
| 10 | | | | 10.01 | 9.96 | | |
| 15 | | 15.09 | 15.06 | 15.06 | 15.03 | | 15.71 |
| 20 | | 19.90 | 20.14 | 20.14 | 19.49 | | 19.37 |
| 25 | | 26.81 | 26.18 | 26.18 | 25.27 | | 23.72 |
| 30 | | 30.06 | 29.31 | 28.93 | 28.93 | | 29.25 |
| 40 | | 40.33 | 44.20 | 43.07 | 41.64 | | 41.82 |
| 50 | | 50.59 | 56.38 | 52.64 | 52.05 | 51.97 | 51.96 |
| 60 | 60.49 | 60.49 | 56.37 | 57.06 | 57.33 | 59.15 | 59.13 |
| 70 | | | 72.67 | 69.75 | 71.66 | 70.23 | |
| 80 | | | 82.92 | 82.22 | 77.40 | 79.93 | |
| 90 | 89.62 | 89.62 | 92.81 | 88.83 | 86.00 | | |
| 100 | | 103.78 | 98.24 | 100.49 | 107.50 | | |
| 120 | 122.49 | 116.20 | 120.07 | 115.15 | 121.67 | | |
| 140 | 140.41 | 133.05 | 135.83 | 135.00 | 136.26 | | |
| 160 | 161.33 | 162.73 | 155.64 | 150.00 | 163.70 | | |
| 180 | ***183.74 | 183.17 | 174.24 | ***180.00 | ***182.50 | | |
| 200 | ***210.62 | 215.87 | | ***202.50 | ***204.39 | | |
| 備注 REMARK | ***為達到此速比時，必需搭配6P馬達使用 ***IT NEED USE 6 POLE MOTOR TO REACH CERTAIN RATIO | | | | | | |

| 公稱速比 NORMAL RATIO | 低段實際減速比 ACTUAL RATIO | | | | | | |
|----------------------|----------------------|---------|---------|---------|-------|-------|-------|
| | 0.1kW | 0.2kw | 0.4KW | 0.75KW | 1.5KW | 2.2KW | 3.7KW |
| 250 | 255.98 | 258.02 | 255.16 | 264.54 | | | |
| 300 | 300.50 | 291.90 | 300.12 | 299.28 | | | |
| 350 | 340.03 | 354.98 | 344.47 | 356.29 | | | |
| 400 | 396.18 | 389.75 | 389.76 | 401.72 | | | |
| 450 | | 467.84 | 443.98 | 457.24 | | | |
| 500 | 510.63 | 528.35 | 493.38 | 519.30 | | | |
| 600 | 610.64 | 600.78 | 594.88 | 599.53 | | | |
| 700 | 687.84 | | 717.74 | 705.75 | | | |
| 800 | 802.78 | 825.28 | 800.32 | 815.69 | | | |
| 900 | 908.34 | | 884.57 | 922.80 | | | |
| 1000 | 1007.13 | 1052.10 | 1000.40 | 1016.86 | | | |
| 1200 | 1321.92 | 1224.82 | 1200.48 | 1210.37 | | | |
| 1500 | 1485.90 | 1523.73 | 1500.61 | 1484.37 | | | |
| 1800 | 1810.42 | 1771.61 | 1775.94 | 1775.2 | | | |

4-7 潤滑油 LUBRICANT

本公司于出廠前已添加潤滑油脂 (BT-860-0),在正常條件下運轉20,000小時可不比更換潤滑油脂,但在特殊環境下運轉時,如:高溫,長時間運轉,動擊負荷等,則換油頻率為10,000-15,000小時。

ALL REDUCERS FILLED WITH LUBRICANT(BT-860-0)BEFORE DELIVERY,NORMALLY,IT NO NEED TO REPLACE LUBRICANT FOR FIRST 20,000 HRS RUNNING,BUT IF WORKING IN SPECIAL APPLICATION,SUCH AS:HIGH TEMPERATURE, 24 HRS RUNNING,HEAVY DUTY IMPAT....etc,THEN LUBRICANT NEED TO BE CHANGED IN EVERY 10,000-15,000 WORKING HOURS.

油量表/重量表 (LUBRICANT/WEIGHT TABLE)

| 馬力 CAPACITY | 出力軸 OUTPUT SHAFT | 本體框號 HOUSING CODE | 機型TYPE | | | | | | | | |
|----------------|------------------------|-------------------------|--------------------------|------------------|------------------------|------|------|-------|-------|------|------|
| | | | 油量表 (公升) LUBRICANT(L) | | 重量表 (公斤) WEIGHT(KG) | | | | | | |
| | | | CH CHM CHD | CV CVM CVD | CH | CHM | CHD | CV | CVM | CVD | |
| 100W 1/8HP | Φ18 | 1# | 0.19 | 0.18 | 5.60 | 5.22 | 2.90 | 5.80 | 5.12 | 2.80 | |
| | Φ22 | 2# | 0.38 | 0.39 | 7.30 | 6.40 | 4.00 | 7.30 | 6.52 | 4.10 | |
| | Φ28 | 1#+3# | 0.8 | 0.85 | 14.6 | 12.4 | 11.3 | 14.6 | 12.52 | 11.4 | |
| 200W 1/4HP | Φ18 | 1# | 0.18 | 0.18 | 7.00 | 5.22 | 2.90 | 7.00 | 5.12 | 2.80 | |
| | Φ22 | 2# | 0.38 | 0.39 | 8.60 | 6.42 | 4.00 | 8.80 | 6.52 | 4.10 | |
| | Φ28 | 3# | 0.63 | 0.68 | 11.0 | 9.12 | 8.30 | 10.8 | 8.92 | 8.10 | |
| 400W 1/2HP | Φ32 | 2#+4# | 1.30 | 1.40 | 27.6 | 24.0 | 23.0 | 28.0 | 24.4 | 22.8 | |
| | Φ22 | 2# | 0.38 | 0.39 | 11.1 | 6.42 | 4.80 | 11.2 | 6.52 | 4.90 | |
| | Φ28 | 3# | 0.63 | 0.68 | 14.2 | 9.12 | 8.30 | 14.0 | 8.92 | 8.10 | |
| 750W 1HP | Φ32 | 4# | 0.95 | 1.05 | 27.0 | 22.2 | 21.5 | 26.9 | 23.2 | 22.5 | |
| | Φ40 | 3#+5# | 1.80 | 1.90 | 46.0 | 39.8 | 39.1 | 47.0 | 40.8 | 40.1 | |
| | Φ28 | 3# | 0.63 | 0.68 | 15.5 | 12.1 | 8.30 | 15.0 | 11.9 | 8.10 | |
| 1500W 2HP | Φ32 | 4# | 0.95 | 1.05 | 27.6 | 25.1 | 21.5 | 28.0 | 26.1 | 22.5 | |
| | Φ40 | 5# | 1.26 | 1.38 | 42.3 | 37.3 | 32.0 | 41.9 | 36.3 | 31.0 | |
| | Φ50 | 3#+6# | 3.00 | 3.13 | 91.5 | 83.5 | 79.2 | 91.5 | 82.5 | 77.2 | |
| | Φ32 | 4# | 0.95 | 1.05 | 33.6 | 25.0 | 22.0 | 34.6 | 26.0 | 23.0 | |
| 2200W 3HP | Φ40 | 5# | T | 1.470 | 1.590 | 49.6 | 37.3 | 33.0 | 49.0 | 36.3 | 32.0 |
| | | | TT | 1.260 | 1.470 | | | | | | |
| | Φ50 | 6# | 2.520 | 2.600 | 94.0 | 74.3 | 70.0 | 94.0 | 71.3 | 67.0 | |
| | Φ50 | 4#+6# | 3.470 | 3.650 | 105.0 | -- | -- | 106.0 | -- | -- | |
| 3700W 5HP | Φ40 | 5# | D | 1.680 | 1.800 | 49.0 | 40.8 | 36.5 | 51.0 | 39.8 | 35.5 |
| | | | T | 1.490 | 1.590 | | | | | | |
| | Φ50 | 6# | 2.520 | 2.600 | 92.5 | 77.8 | 73.5 | 88.5 | 74.8 | 70.5 | |
| 3700W 5HP | Φ40 | 5# | 1.680 | 1.800 | 54.8 | 43.8 | 39.5 | 55.3 | 42.8 | 38.5 | |
| | Φ50 | 6# | 2.520 | 2.600 | 98.5 | 78.8 | 74.5 | 94.5 | 75.8 | 71.5 | |

備注: 1、此表僅供參考,具體以實物為準
1、THIS TABLE IS FOR REFERENCE ONLY SUBJECT TO THE SPECIFIC KIND

4-8 速比/段數使用表 RATIO/GEAR STAGE TABLE

| 馬力 CAPACITY | 速比 RATIO | 雙段 (D) 2 ND STAGE | 三段 (T) 3 ND STAGE | 雙本體 1#+3# TWIN HOUSING | 雙本體 2#+4# TWIN HOUSING | 雙本體 3#+5# TWIN HOUSING | 雙本體 3#+6# TWIN HOUSING |
|-----------------|-------------------|------------------------------------|------------------------------------|---------------------------------|---------------------------------|---------------------------------|---------------------------------|
| 1/8HP (100W) | 1/3-1/50 | D | | | | | |
| | 1/60-1/200 | | T | | | | |
| | 1/150、 180、200 | | T | | | | |
| | 1/250-1/1800 | | | DD | | | |
| 1/4HP (200W) | 1/3-1/35 | D | | | | | |
| | 1/40-1/200 | | T | | | | |
| | 1/60、180、200 | | T | | | | |
| | 1/250-1/1800 | | | | DD | | |
| 1/2HP (400W) | 1/3-1/35 | D | | | | | |
| | 1/40-1/200 | | | | | | |
| | 1/250-1/1800 | | | | DD | | |
| 1HP (750W) | 1/3-1/30 | D | | | | | |
| | 1/40-1/120 | | T | | | | |
| | 1/125-1/200 | | (TT) | | | | |
| | 1/250-1/1800 | | | | | | DD |
| 2HP (1500W) | 1/3-1/22 | D | | | | | |
| | 1/25-1/50 | | T | | | | |
| | 1/55-1/100 | | | | | | |
| | 1/105、 115、120 | | T | | | | |
| | 1/100-1/180 | | T | | | | |
| 3HP (2200W) | 1/3-1/15 | D | | | | | |
| | 1/20-1/100 | | T | | | | |
| 5HP (3700W) | 1/3-1/25 | D | | | | | |
| | 1/30-1/60 | | T | | | | |

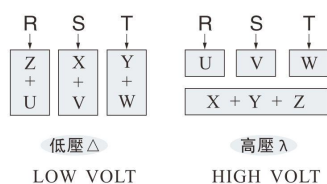
**馬達到以下速比時,必需搭配6P馬達使用TO REACH CERTAIN RATIO THAT NEED TO USE 6 POLE MOTOR

| | |
|-----|-------------------------------|
| 2HP | 1/130、1/150、1/160、1/170、1/180 |
|-----|-------------------------------|

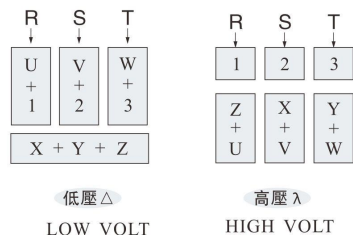
4-9 接線方式 WIRING DIAGRAM

(1) 三相馬達/剎車器接線方式 (THREE PHASE MOTOR W/BRAKE UNIT DIAGRAM)

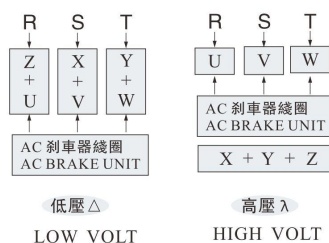
(a) 三相六條馬達電源線 (FOR SIX WIRES)



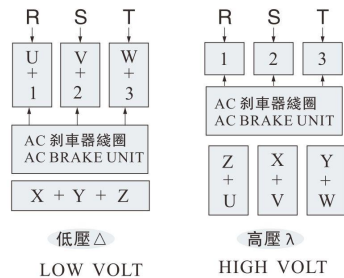
(b) 三相九條馬達電源線 (FOR NINE WIRES)



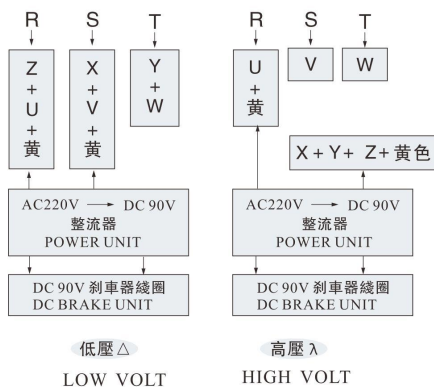
(c) 三相六條馬達電源線交流剎車器 (SIX WIRES W/ AC BRAKE UNIT)



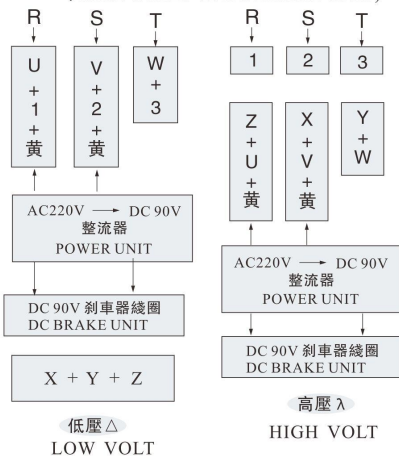
(d) 三相九條馬達電源線交流剎車器 (NINE WIRES W/ AC BRAKE UNIT)



(e) 六條馬達電源線直流剎車器 (SIX WIRES W/ DC BRAKE UNIT)

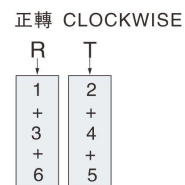


(f) 九條馬達電源線直流剎車器 (NINE WIRES W/ DC BRAKE UNIT)

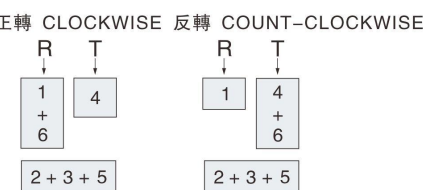


(2) 單相馬達/剎車器接線方式 (SINGLE PHASE MOTOR W/BRAKE UNIT DIAGRAM)

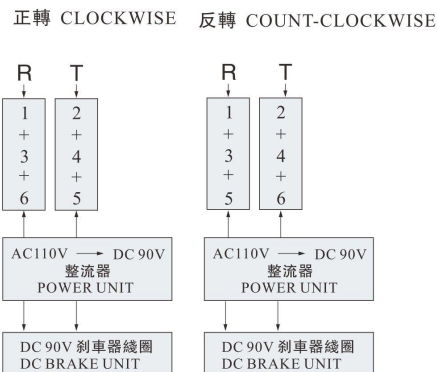
(a) 單相低壓 LOW VOLTAGE-110V



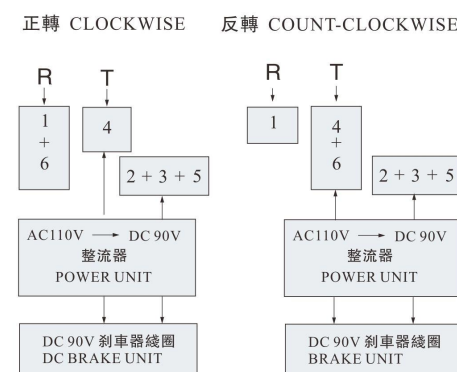
(b) 單相高壓 HIGH VOLTAGE-220V



(c) 單相低壓 110V 直流剎車器 LOW VOLTAGE 110V WITH DC BRAKE UNIT

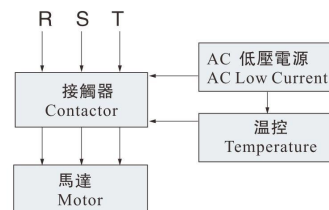


(d) 單相高壓 220V 直流剎車器 HIGH VOLTAGE 220V WITH DC BRAKE UNIT

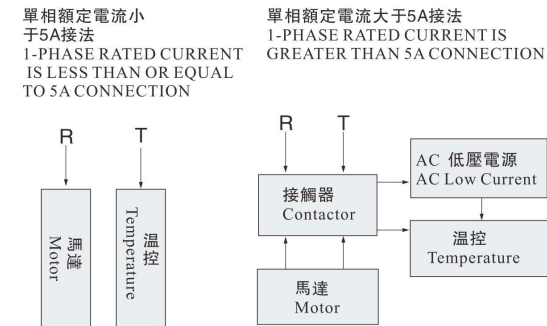


(3) 加溫控接線方式 (TEMPERATURE CONTROL WIRING)

(a) 三相馬達加溫控接線圖 3-PHASE THERMOSTAT WIRING DIAGRAM

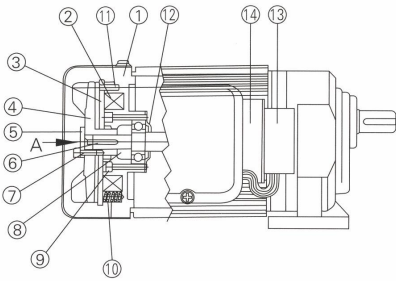


(b) 單相馬達加溫控接線圖 1-PHASE THERMOSTAT WIRING DIAGRAM



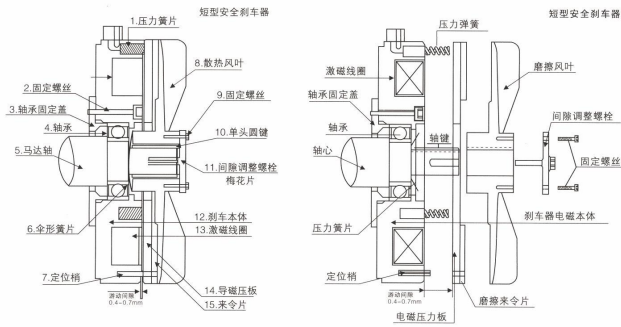
剎車裝配圖

Braking assembly drawing



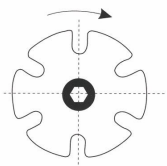
- 1、剎車主體 Braking main body
- 2、剎車激勵繞圈 Braking excitation coil
- 3、來令片 Lining
- 4、散熱風葉 Radiator
- 5、調整螺栓 Calibrating bolt
- 6、單圓鍵 Single round parallel key
- 7、固定螺絲 Set screws
- 8、墊圈 Washer
- 9、套筒螺絲 Telescopic screw
- 10、壓縮彈簧 compression spring
- 11、彈簧梢 Spring pin
- 12、軸承蓋 Bearing cap
- 13、整流器 Rectifier
- 14、整流器鐵板 The iron plate rectifier

剎車零件分解圖 (BRAKE UNIT SECTION DIAGRAM)



- 1、壓力彈簧 PRESSURE SPRING
- 2、固定螺絲 FIXED SCREW
- 3、軸承固定蓋 FIXED BEARING PLATE
- 4、軸承 BEARING
- 5、馬達軸 MOTOR SHAFT
- 6、傘形簧簧片 DISC SPRING
- 7、定位銷 FIXED PIN
- 8、散熱風葉 FAN
- 9、固定螺絲 FIXED SCREW
- 10、固定鍵 KEY
- 11、調整螺栓 GAP ADJUSTMENT BOLT
- 12、煞車本體 BRAKE HOUSING
- 13、激勵繞圈 BRAKE COIL
- 14、導磁壓板 FRICTION PLATE
- 15、來令片 FRICTION BRAKE DISC

剎車間隙調整 (ADJUST BRAKE CLEARANCE)



- 1、請先移除固定螺絲
PLEASE REMOVE TWO PIECES FIXED SCREWS IN ADVANCE.
- 2、順時針調整一格，其間距縮小0.07-0.10mm。
EVERY SINGLE POSITION ADJUSTMENT, BRAKE CLEARANCE WILL REDUCE 0.07-0.10mm

剎車間隙調整原因:

The reason of calibrating braking gap:

- 1、每當使用一段時間剎車動作不正確時。
- 2、至少每年需要調整剎車間隙一次。
- 3、依使用的頻率多寡，可自行決定調整間隙的次數。
- 4、請使用厚薄規調整剎車間隙在0.3-0.5mm之間。

間隙調整方法:

The way of gap calibration:

- 1、打開馬達風蓋，拆掉調整螺栓上兩個固定螺絲。
- 2、旋轉調整螺栓可調整剎車間隙。順時針---縮小間隙，逆時針---放大間隙，每等距調整約0.2mm。
- 3、以厚薄規調整好間隙後，將調整螺栓上四個或六個孔之其中對角兩孔固定將固定螺絲鎖緊即完成調整間隙動作，其所調整方法及所需間隙厚薄規為準。

- 1、When braking action is not right after using for some time.
 - 2、Braking gap needs to be adjusted once a year at least.
 - 3、The frequency of calibration gap can be determined automatically according to use frequency.
 - 4、Please use thickness gauge to calibrate braking gap between 0.3-0.5mm.
- 1、Open wind cover of the motor and dismantle two fixed screws on calibration bolt.
 - 2、Rotate and calibrate bolt to calibrate braking gap. Clockwise shorten the gap, counterclockwise-enlarge the gap, with every isometry calibration of 0.2mm.
 - 3、After the gap is calibrated with thickness gauge, the diagonal holes among four or six holes in calibration bolt are fixed, and fixed screws are fixed to complete gap calibration, and it refers to calibration method and gap determined by thickness gauge.

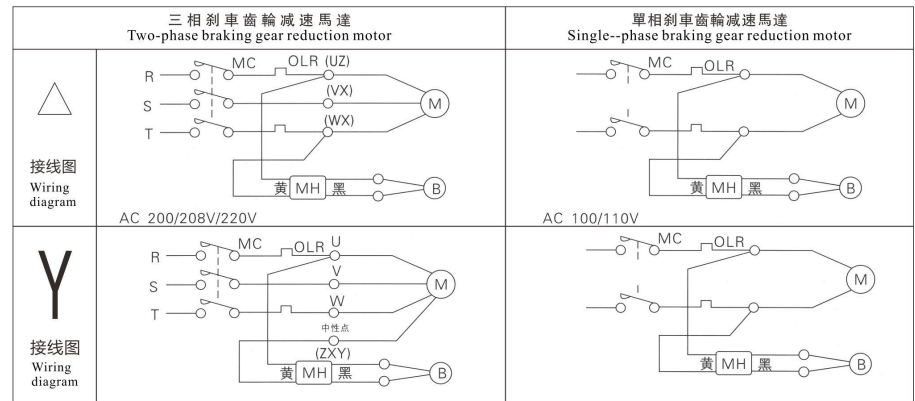
特長 Strong suits

- 斷電時動作.....無激磁作動剎車，斷電時自動剎車動作。
Action after power off.....without excitation action braking, with automatic braking action when power off
- 接線容易.....整流器裝于馬達外殼上，接交流電源。
Easy connection.....rectifier installed on the shell of motor, connecting AC power.
- 小型重量輕.....加裝剎車所增加馬達長度極少，體積小，重量輕。
Small-size and lighter.....the length of motor increased from adding brake is very little, small volume, light weight.
- 壽命長.....剎車來令片材質耐磨耗性佳，剎車動作正確，調整方便。
Long service life.....the material of the lining has good endurance, with correct braking action, easy calibration.

剎車規格標準 Braking specification standard

| | | |
|---|--|---|
| 輸出電壓 Output voltage | 三相剎車齒輪減速馬達 Three-phase braking gear reduction motor | 單相剎車齒輪減速馬達 Single-phase braking gear reduction motor |
| 輸出電壓 Discharge voltage | AC200/208/220V-50/60HZ | AC100/100/-50/60HZ |
| 輸出電壓 Output voltage | DC90/108V | DC90/180V |
| 周圍環境溫度 Ambient temperature | -10°C~+40°C | |
| 絕緣耐壓 Insulated and pressure resistance | AC1500V | |

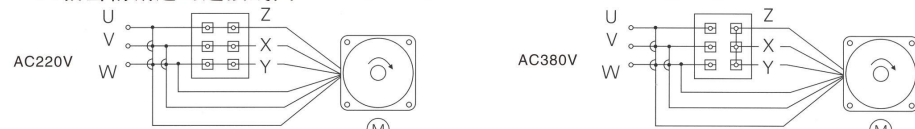
接線圖



- M----馬達 Motor
- B----剎車 Brake
- MH---整流器 Rectifier
- MC----電磁接觸器 Electromagnetic connector
- OLR----過負荷繼電器 Overload relay

注：剎車馬達接變頻器使用，剎車繞圈可能產生吸合不良，剎車繞圈可直接銘牌標注的市電。
Note: braking motor is connected to transducer, and braking coil may generate bad actuation, and braking coil can be marked directly.

三相齒輪減速馬達接線圖 Three-phase gear reduction motor wiring diagram



單相齒輪減速馬達接線圖 Single-phase gear reduction motor wiring diagram

